

Wi-Fi Cities

Leverage Resources. Minimize Disturbance. Maximize reach.



Benefit from the scalability of P2's patented MeshInfinity.

MeshInfinity is the world's only true end-to-end 802.11ac with bandwidth up to 1.7Gbps. MeshInfinity patented technology redefines wireless technology.



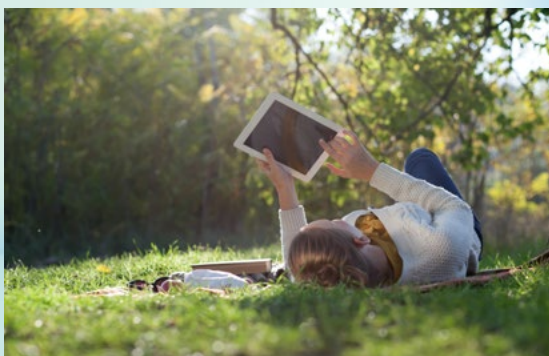
MeshInfinity opens a world of possibilities for every municipality. Provide wireless traffic-control, power grid communication, smart-meter reading, citizen access to government services, boost economic development, and much more.



Leverage existing network and infrastructure. Mix traditional wired networks with MeshInfinity's wireless networks to extend connectivity to remote area that were previously economically impractical to do so. Minimal construction works.

Boost reliability with patented self-healing, fail-over redundancy and alternative routing path technologies.

Minimize disturbance to neighbourhoods, businesses and environments with MeshInfinity's wireless technology. Imagine the resources and time saved when additional cabling is not required. Limited construction works. No road digging. Minimal impact on traffic flow. Minimal impact on the environment.



P2 Wireless. Wireless redefined.

Related Products



Z500

- Outdoor High Capacity AP
- Built-in 2.4GHz antenna
- External 5GHz antenna
- MeshInfinity system software

Technical Specifications

Dimensions

270mm (W) × 80mm (D) × 270mm (H)

Installation

Pole mountable (Ø40 to Ø52mm)

Max. No. of Spatial Streams

2×2:2

User Bandwidth

867Mbps (5GHz) 300Mbps (2.4GHz)

Aggregated Bandwidth

1167Mbps

Max. No. of Simultaneous Radio

2

Widensity Index

60

Ethernet Interface

1 × 10/100/1000Mbps, RJ-45, MDI/MDIX

Operating Environment Temperature

-40 to 65 Degree Celsius

Humidity

5% to 95% non-condensing

PoE

802.3at



X100

- Access / Backhaul AP
- 3 dual-band radio, all external antenna (2.4GHz & 5GHz)
- MeshInfinity system software

Technical Specifications

Dimensions

270mm (W) × 278mm (D) × 90mm (H)

Installation

Ceiling, wall and pole mountable

Max. No. of Spatial Streams

3×3:3

User Bandwidth

450Mbps

Aggregated Bandwidth

1350Mbps

Max. No. of Simultaneous Radio

3

Widensity Index

60

Ethernet Interface

1 × 10/100/1000Mbps, RJ-45, MDI/MDIX

Operating Environment Temperature

-40 to 65 Degree Celsius

Humidity

10% to 90% non-condensing

PoE

802.3at



X20

- Outdoor Backhaul AP
- Built-in 5GHz 19dBi antenna
- External 5GHz antenna
- MeshInfinity system software

Technical Specifications

Dimensions

270mm (W) × 80mm (D) × 270mm (H)

Installation

Pole mountable (Ø40 to Ø52mm)

Max. No. of Spatial Streams

2×2:2

User Bandwidth

867Mbps

Aggregated Bandwidth

1734Mbps

Max. No. of Simultaneous Radio

2

Widensity Index

60

Ethernet Interface

1 × 10/100/1000Mbps, RJ-45, MDI/MDIX

Operating Environment Temperature

-40 to 65 Degree Celsius

Humidity

5% to 95% non-condensing

PoE

802.3at